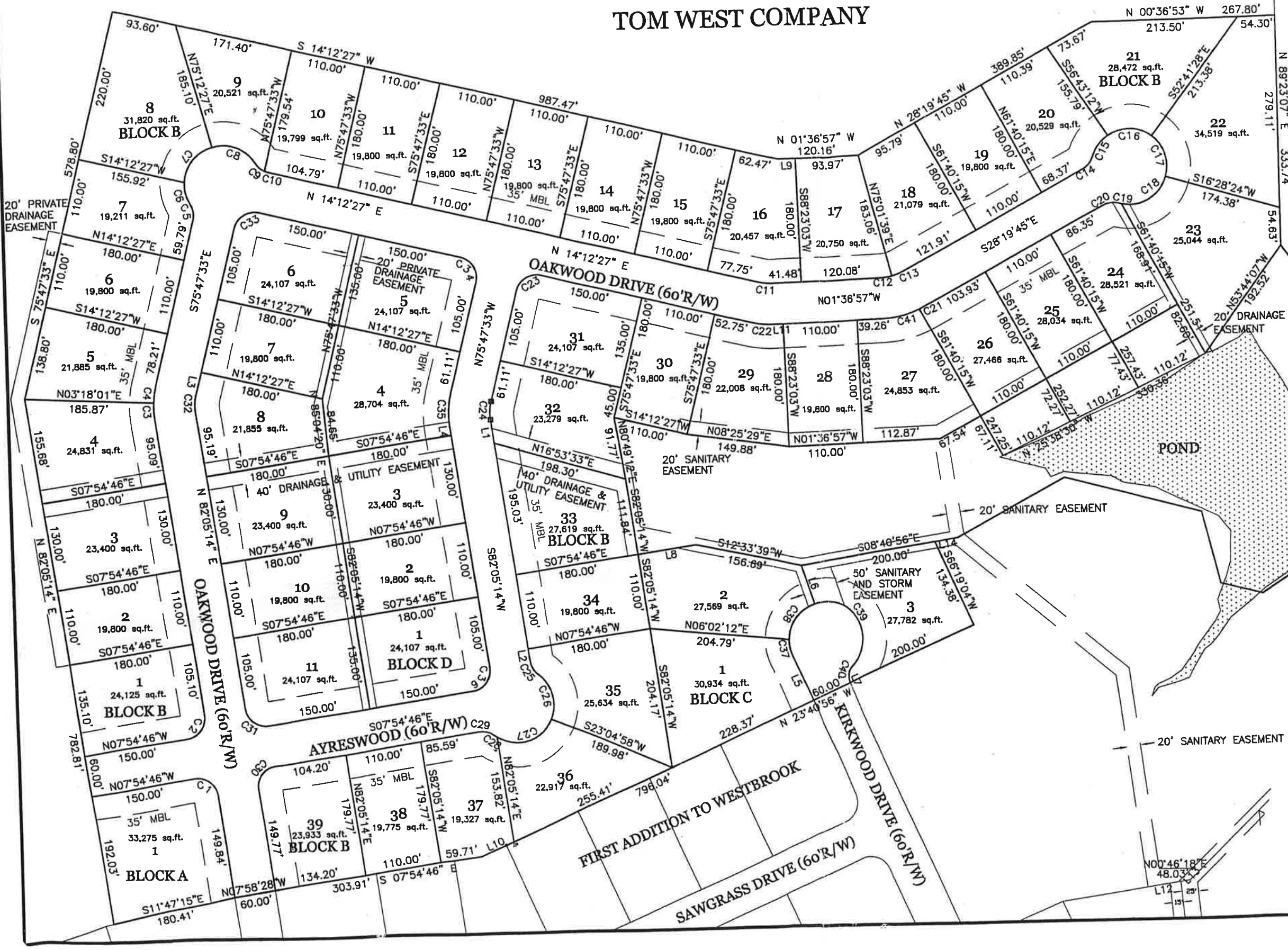


# THIRD ADDITION TO WESTBROOK

TOM WEST COMPANY

C:\Land Project\210503-CityComments\dwg\0503-11-15-06.dwg, 11/27/2007 3:10:00 PM, Minolta Di351\_251\_200 PCL6.pc3, 1:1



LINE	LENGTH	BEARING
L1	35.05	N82°05'14"E
L2	17.80	S82°05'14"W
L3	33.21	N75°47'33"W
L4	13.09	N82°05'14"E
L5	72.11	N86°19'04"E
L6	59.64	N72°13'58"E
L7	1.40	S86°19'04"W
L8	86.69	S07°54'46"E
L9	26.20	S01°36'57"E
L10	52.26	S23°40'56"E
L11	12.30	N01°36'57"W
L12	45.34	N08°21'50"W
L13	27.40	N43°27'17"W
L14	33.56	N08°40'56"W

LINE	LENGTH	BEARING
L1	35.05	N82°05'14"E
L2	17.80	S82°05'14"W
L3	33.21	N75°47'33"W
L4	13.09	N82°05'14"E
L5	72.11	N86°19'04"E
L6	59.64	N72°13'58"E
L7	1.40	S86°19'04"W
L8	86.69	S07°54'46"E
L9	26.20	S01°36'57"E
L10	52.26	S23°40'56"E
L11	12.30	N01°36'57"W
L12	45.34	N08°21'50"W
L13	27.40	N43°27'17"W
L14	33.56	N08°40'56"W

**DRISKELL ENGINEERING**  
 2830 Horace Sheppard Drive, Dothan, Alabama 36303  
 (PHONE) 334-984-2015 (FAX) 334-984-2016